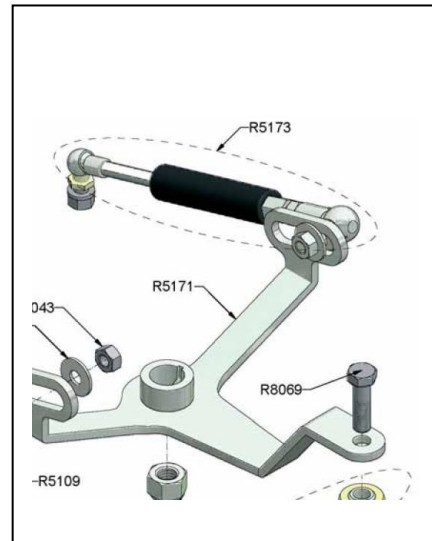


## Accident Update

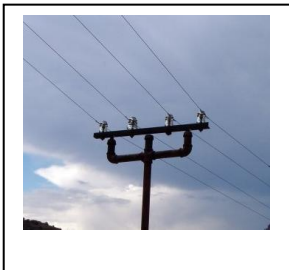
### Roller accident

Do you use a sideways operating roller? ( e.g. Tru-turf) Recommendations are now that the **arm rests should be used at all times** to prevent injuries should the roller change direction abruptly and the operator be ejected from the seat.

Please ensure that the following is included in your maintenance schedule. Under the bonnet you will see the strut transmission (R1573) which controls direction of the equipment. The change in direction mechanism relies on the strut transmission (R1573) sliding in the slot. It is essential that this is kept greased or control of direction back & forth will not be smooth. Tru-turf Inc are investigating using a Teflon washer backed up with a steel washer to endure smooth operation in the future. We will keep you informed.



### OVERHEAD POWER LINES



Again there have been courts cases about accident involving overhead power lines and death by electrocution Do you have any on your course, and what measures have you taken to ensure that nothing snags on the lines, to cause injury and death to your staff, visitors or general public? Even if you do not have any overhead lines, please note in your diary that you have considered this – this will allow you to confirm that you have considered this risk.

8.



Douglas Shearer Hons BSc Agric Botany, Tech IOSH

16 Tarvit Drive  
Cupar  
Fife KY15 5BJ

Tel: 01334 655032  
Mobile: 07989 520 494  
Email: [mhsgolf@dshearer.co.uk](mailto:mhsgolf@dshearer.co.uk)  
Web: [www.mhs-golf.co.uk](http://www.mhs-golf.co.uk)

### February 2010 Newsletter

Hopefully by now the worst of the winter weather is over. It is time to think about reviewing your Health & Safety for the coming season. I will be sending you out the annual update in the next four weeks. Please try to have everything updated by the end of March – after that the grass begins to grow and you will not have time!!

On speaking to one of our Environmental Health Officers, he said that over the summer/ autumn they have almost exclusively been visiting Golf Courses because of Accident Investigation. They now have a list of Golf Courses they will be visiting over the next six months to carry out Safety Audits – he would not tell me which ones!!.

Your AGM is soon approaching. Please ensure that the Safety Policy Declaration is signed by the new Club Captain.

After I have sent out the Annual Update Disc, I will be contacting each of you to arrange a Spring Visit. The visit will last only a couple hours and will go over the MHSgolf Program with you to ensure you are getting full use of it.

Any queries or problems, please contact me by telephone or Email.

**Douglas.**

1.

## Health & Safety Legislation in UK

I have been asked several times about responsibilities in the Golf Club.

There are two concepts which should be borne in mind.

1. **'Duty of care'**. All Employers have a duty to take all reasonable steps to control all hazards and risks at the workplace to acceptable levels. This duty also includes a duty to those who enter the workplace or who are affected by the workplace. There is thus duty of care by the golf club to everyone who enters their land. The primary duty of care is by the Captain & Committee. That is why the Captain must sign the Safety Declaration.

In order to fulfil the 'Duty of Care', the concept of 'due diligence' is exercised.

2. **Due diligence** is the effort made by an ordinarily prudent or reasonable party to avoid harm to another party. This is the part of Health & Safety which requires evidence of having carried out the requirements.

**The means of confirming this, is the Health & Safety Policy, together with all the reports, assessments, etc.**

### Health & Safety Policy

Who is responsible for H&S at your Golf Club?

The Safety Policy should be signed by the Captain on behalf of himself and the committee, they are responsible ultimately for Health & Safety at the Club. However, they can/ will/ must/should have ensured that they have delegated the functions to trained members of staff i.e. Club Secretary, Club Steward, Head Greenkeeper, Club Pro. Each of these members of staff have particular responsibilities and must carry these out. The Captain and Committee must prove that there is a system in place to confirm that the committee has done everything that is reasonably practical to ensure the staff are qualified and kept updated of changes in areas and tasks for which they are responsible.

**There should be a Item in the Agenda on the minutes every management meeting of the Club (including the AGM), to show that H&S has been considered at all levels by the Club.**

### Traffic Management

Do you have a system for keeping people away from delivery lorries? There have been several court cases and EHO visits have been asking about this. Please carry out a Risk Assessment of your traffic Management for your employees, your members and your visitors.



2.

### Qualifications

The recent case of a Fork lift Truck Driver falsifying of qualifications, highlights the fact that employers should hold copies of certificates to confirm they have checked that a member of staff or contractor is qualified to use the equipment or carry out the task.

### Chainsaw Certificate - update

At the moment there is no requirement to update your chainsaw certificate. However, HSE have advised that chainsaw users would benefit from a one day refresher courses – occasional users every three years, regular users every five years. Elmwood College is looking into this and we will keep you informed of developments.

### Accident Update

The likelihood of accidents and there causes are being examined more and more closely in UK. We however do not have the fascination with data, and the manipulation of it, that they have in USA.

In USA it has been shown that **you are more likely to be killed by a golf club than with a golf ball** ( and some of the deaths are premeditated!). More deaths occur involving Golf Buggies than golf balls.

In British industry, the main fatal accidents are:

1. Fall from a height
2. Struck by moving vehicle
3. Struck by moving, including flying/ falling, object



All of these could happen at your Golf Course – Do you have controls in place to bring these to acceptable levels of likelihood and seriousness?

### Asbestos summary

As you know, many of you have no Asbestos in any buildings. We have now included a form to complete in the Program which should be signed to show that you have carried out the assessment and found no action required.

### On-Line Client Update

<http://www.dshearer.co.uk/clientupdates.htm> The password is vinegar

7.

## Risk Assessment Update

### Pesticide update

Following the banning of Casoron G because of traces of dichlobenil being found in waterways, the NPTC have now organised a course and test on applying slug pellets. This does not affect Golf courses but should be looked on as an indication of the continuing way environmental pressures are being brought to bear on Agriculture and Horticulture. ( Slug Pellets are classified under PA4 and a new qualification of PA4S has been agreed). There are rumours that the 'Grandfather Clause for pesticide application' will at last be withdrawn in 2012.

**Kerb Pro:** registration of the active ingredient, Propyzamide, has been revised and the products which contain it are extended to 2014 (Kerb Pro now cleared to 31/03/2014)

### First Aid at Work Update

Some people are being confused by Training Providers saying that as things have changed at start of October 2009, the existing qualifications are now out of date. This is untrue. The existing qualifications are in date until they run out – 3 years from the date of the course.

The basic change are

- the one day course will be looked on as an 'Emergency First Aid at Work Course' which can be used as a qualification in your First Aid risk assessment to cover low risk areas such as offices and banks. This course should be updated every 3 years.
- the full first aid course will last 3 days instead of four, but the update will still last 2 days. There is a suggestion that Full First Aiders should attend a one day update every year but this is not mandatory.

### Calorifier - hot water tank

The hot water tank can sometimes be called a calorifier. A calorifier is generally a sealed hot water tank held at a safe temperature. The possibility of Legionella is reduced if the calorifier is held above 60°C. It is important not to go far above this as the delivery temperature at the tap could burn anyone washing their hands.

We have now included a Risk Assessment in the MHSgolf Program for Legionella. This should be completed and signed to show the controls which are in place and the actions you have taken.

## Needles in bins and shrub beds

On some golf courses the cleaning of waste bins or weeding in neglected shrub beds has uncovered needles & syringes

### All needle stick injuries should be reported under RIDDOR

Action : if needles are found then it is imperative to control this in the future.

- Carry out a Risk Assessment and review it should any needles are discovered.
- Please tell staff to be vigilant as needle stick injury can pass on blood borne diseases – HIV & Hepatitis – and report any instances to the Head greenkeeper immediately.
- spray weedkiller, instead of pulling weeds, in some areas.
- wear of needle proof gloves when emptying rubbish bins in some areas.
- find, from the Local Authority, the best way to dispose of needles/ syringes.

### Gas hoses

Do you have butane or propane at your Club – gas barbeques, heating of bothy etc. Please ensure you check the hoses annually and replace at least every five years as the rubber can perish and allow gas to escape. This has been the subject of some incidents/ accidents/ fatalities.

### Working alone

Several Safety Audits have highlighted arrangements for staff who work alone, both on the Course and in the Clubhouse

Most of these can be queries are answered by use of Mobile Phones.

- Greenkeeper text the Head Greenkeeper when he arrives on Sunday morning (in) and text again when he leaves (out)
- Bar staff text the Manager when they leave late evening

The question which should be asked is: If an accident happened to a member of staff at any time, and they were unable to call for help, when would they be found? The answer has to be within a reasonable time – next morning is not acceptable!

This assessment should include all staff and all times when employees are on club property.

## Buggy Hire & use

### Full Size Golf Buggies

The use of golf buggies and their safety on slopes is one of the problems we have on the golf course. If we do not warn a user of excess slope we could be involved in a court case in the event of an accident on which slopes are considered a contributing factor.

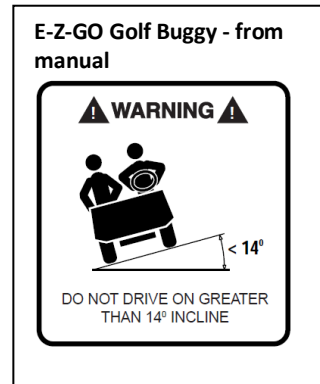
There are three principal makes of golf buggy on the market. These are used extensively on golf courses in UK and indeed worldwide.

**E-Z-Go Golf Buggy** - max 14 degrees in any direction

**Yamaha Golf Buggy** - max 20 degrees up and down hills

**Club Car Golf Buggy** - max 15 degrees in any direction

Salesmen have assured me that it is safe at 20° from horizontal but this has yet to be confirmed in writing.



## Single-Seater buggies

Many older and disabled golfers are now asking to use their own personal single-seater buggies around the course. Obviously you cannot allow single-seater buggies on your course which have a lower specification to your hired buggies.

I have written to many buggy manufacturers/ suppliers and found a huge mix of specification. In one case the supplier offers rear stabilisers to enable the golfer to climb hills without performing a backward summersault – he could not confirm any particular slope!

However so far only three buggies have confirmed they are CE marked and are safe at 20° from the horizontal

Grasshopper  
<http://www.grass-hopper.co.uk/>  
[http://www.grass-hopper.co.uk/single\\_seat.htm](http://www.grass-hopper.co.uk/single_seat.htm)



**Powerhouse Golf Buggy**  
[www.powerhouseproducts.co.uk](http://www.powerhouseproducts.co.uk)



Boost Buggy  
[www.turbocaddy.com](http://www.turbocaddy.com)  
As we get more information, we will keep you informed



### Yamaha Electric Golf Buggy – from manual

Performance:

Factory speed setting 12 mph (19 km/h)

Maximum speed 15 mph (24 km/h)

Minimum turning radius 114.2 in. (2.9 m)

Seating capacity 2 persons

**Hill climbing ability 20° on pavement**

Remember to have a Buggy Policy in place which states that buggies should not be used within 2 metres from a tee, green or bunker. If there are areas outwith this which have hazardous slopes, the golfer must be informed. They should also sign the Buggy Policy and Safe Working Practice. Details of

the Buggy Policy are on the MHSgolf Program : Sect 6 Management Forms

If the slopes are above 14° and you hire out E-Z-Go Buggies, please carry out a risk assessment – contact me if you think you have problems.